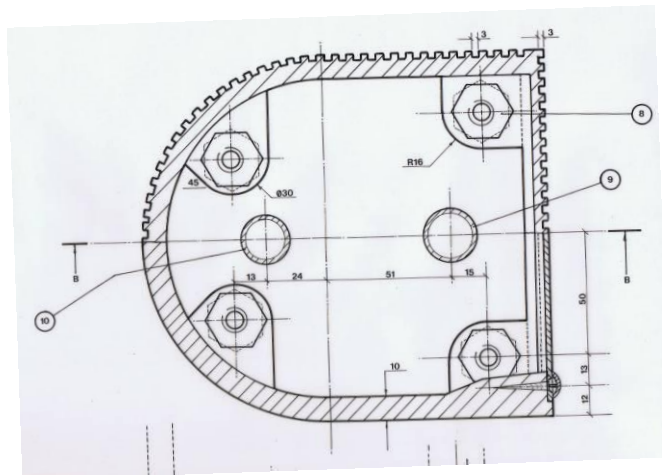
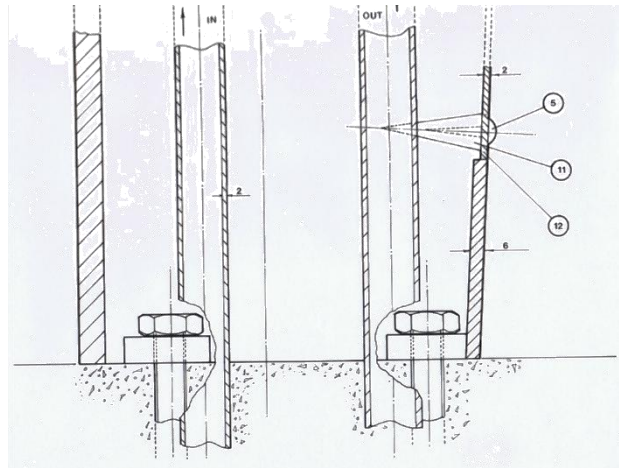
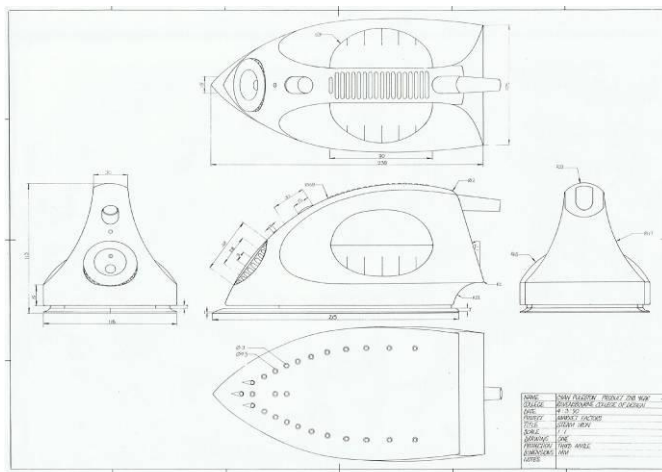


Section Drawings

These kinds of drawings are drawn when you want to show what the inside of something looks like. A section is a drawing that cuts through the product at a particular place. For example the drinking fountain design we looked at earlier. The fountain is fixed to the floor and a section drawing shows how this would be done and shows the below the line feature of how it is fixed. The cut point or section is usually marked with diagonal lines where the product is sectioned.



Another example of this kind of drawing is in the design for a domestic iron below. Here is an Orthographic drawing of the iron model.



Photograph of the block model above. The section drawing below shows how the inside of the iron will work. Each part is numbered and is in a key.

